

# CENTER 340 Thermo Recorder

CENTER 340/342 are temperature data logger and humidity/temperature data loggers. Even though these units are focus on data collecting, we had place a LCD display to show the operator on site information. In case of dark environment, it is even equipped with back light display. Both units feature a real time clock inside so that the events are captured with time stamps. The recording memory can hold up to 64,000 records which can produce high resolution test result.

With water proof housing, the temperature data logger 340 has a lot of applications such as environmental monitoring, food transportation process monitoring or air condition monitoring etc. The data is download through IR photo interface so we do not have to worry about connector might be damaged by water.

## FEATURES:

- LCD With Back Light
- Battery Status Display
- Memory Status Display
- Shipped With Wall Hanging Tag
- Water Proof For All Weather Application
- 64,000 Records Datalogger
- "SlimCom" RS-232 Interface
- With Window Software



LED Back Light



# CENTER 342 Temperature Humidity Recorder

CENTER 342 is a humidity/temperature data logger. It also has most of the features that 340 has excepted waterproofness. This is caused by the nature of humidity measuring.

## FEATURES:

- LCD With Back Light
- Battery Status Display
- Memory Status Display
- Shipped With Wall Hanging Tag
- 32,000 Records Datalogger Per Channel
- "SlimCom" RS-232 Interface
- With Windows Software



LED Back Light



## SPECIFICATIONS

|                         | 340                       | 342                       |
|-------------------------|---------------------------|---------------------------|
| Measurement Temperature | -30 ~ 70°C, -22 ~ 158°F   | -30 ~ 70°C, -22 ~ 158°F   |
| Measurement Humidity    |                           | 5% ~ 98%RH                |
| Accuracy                | ±0.7°C                    | ±0.7°C; ±3%RH             |
| Resolution              | 0.1°C; 0.1°F              | 0.1°C; 0.1°F; 0.1%RH      |
| Battery                 | 1.5V size AAA battery x 2 | 1.5V size AAA battery x 2 |
| Dimensions              |                           |                           |
| Recorder                | 92 x 55 x 21 mm           | 92 x 55 x 22 mm           |
| Hanger                  | 106.5 x 59 x 25.5 mm      | 106.5 x 59 x 25.5 mm      |
| CENTER345               | 107.5 x 62 x 28 mm        | 107.5 x 62 x 28 mm        |

## STANDARD ACCESSORIES

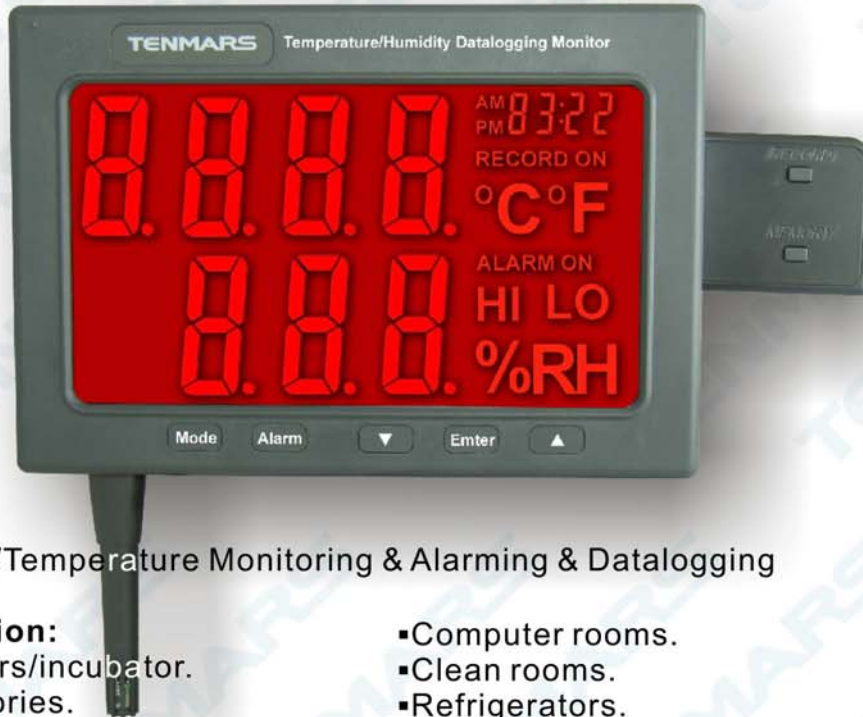
Battery, Operation Manual, RS-232 Cable, Software, CENTER 345, Hanger.

# CENTER 345 Communication Base



# New Large LED Screen Temperature/ Humidity Datalogging Monitor

**TM-185**  
**TM-185D**  
**(DATALOGGER)**



Humidity/Temperature Monitoring & Alarming & Datalogging

**Application:**

- Chambers/incubator.
- Laboratories.
- Electronics manufacturing.
- Computer rooms.
- Clean rooms.
- Refrigerators.
- Other Critical areas.

**DISPLAY:**

- Large LED display for simultaneous reading of humidity and temperature.
- Dual LED display: the maximum reading on the top display (primary display) is 1999. The maximum reading on the bottom display (secondary display) is 999.
- Time clock.

**Features:**

- Complete environmental monitor and alarm.
- Wall-Mounted LED type easy reading.
- Alarm set for Hi and Low limit-Temperature and Humidity.
- Datalogging Capacity 30,000 records.(DG-185)
- LED displays real time data.
- USB interface.(DG-185)

**Specifications**

|                                 |  |
|---------------------------------|--|
| Model                           | TM-185/TM-185D   |
| Temperature ranges              | -20°C~60°C(-4°F~140°F)   |
| Temperature Accuracy            | :±1.0°C/±1.8°F (-5.0°C ~40.0°C /23°F~104°F) ; other ±2.0°C /3.6°F  |
| Temperature Resolution          | 0.1°C/0.1°F  |
| Temperature update rate         | 1 times/ second  |
| Temperature sensor type         | Diode  |
| Relative Humidity ranges        | 5%~95%   |
| Relative Humidity Accuracy      | ±2.5%RH(at 25°C, 10%RH~90%RH). ±5.0%RH(at 25°C, <10%RH, >90%RH)    |
| Relative Humidity Resolution    | 1.0 RH   |
| Relative Humidity response time | below 4 second   |
| LCD display                     | 214*120(8.4*4.73 inch)   |
| Power supply                    | AC to DC Adapter (9V/1A)   |
| Battery Backup                  | DC 9V battery enables continued measuring during power disruptions |
| Size                            | 260x178x47mm(L*W*H)  |
| Weight                          | 1000 g   |

# 2008 NEW PRODUCTOR

**YCT** Puts out the ultra new multi-functional thermometer with high accuracy and right prices.

## TC+RTD THERMOMETER + DATALOGGER

**TC-127C & RTD-126C & TR-176C MODEL  
TC + RTD TYPES THERMOMETER + DATALOGGER**



1. 4-1/2 digital counts with triplet displays.
2. Resolution: 0.1°C/0.01°C, 0.1°F/0.0°F.
3. TC: K/J/T/E/R/S/N types.  
RTD: 2W/3W/4 Wire Pt 385 100 ~ 1K, 3916, 3926.
4. The infrared transmitted interface +USB or Rs232 transmission line & window software.
5. 10000 Records Data Logger for each channel.
6. Auto/Manual power off, The electric capacity of 5 sections of batteries Shows.
7. 9 sections of reservations record is set up.
8. Call-fit quick read memory data.
9. Warning beeper with Hi/Lo setting, TIME / REL setting .
10. Setting Temperature offset adjust (Can resume the initial value function temporarily or forever).
11. TC-127C & RTD-126C & TR-176C is offered for a long time & electric consumption improves measure mode. (Record one in an hour, can record for more than 1 year in succession).



## DATALOGGER

R1-1011 DCV+DCmA  
R1-4011 Temperature  
R1-5111 Temperature + TC:K type  
R1-6111 Temperature + RTD:Pt 385 100

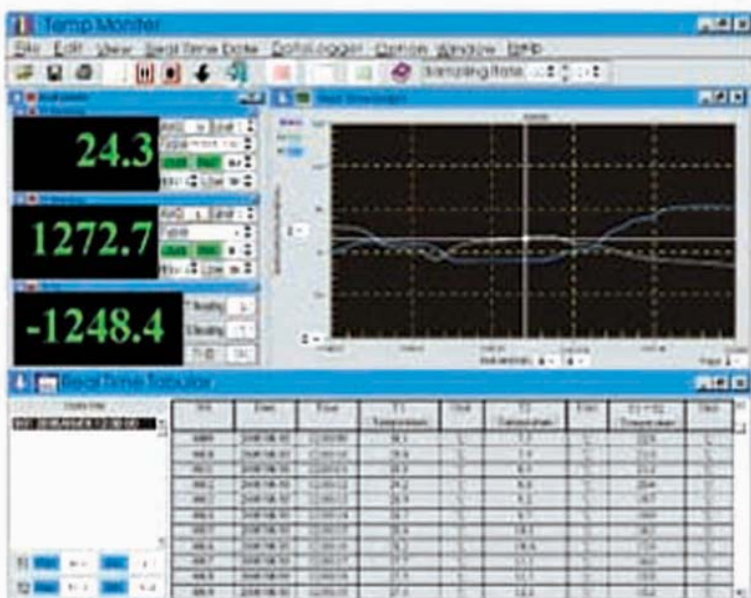
1. 4- ½ digit 19999 LCD display or LED indicators, 16-bit A/D.
2. LCD display --The five sections battery electricity shows symbols.
3. Express the state of the battery electricity with LED flashing Numbers. 10000 Records Data Logger for each channel.
4. Temperature range: -20 ~ 70°C.  
DCV: +/- 20V , DCmA: +/- 200mA.  
TC types: K, J, T, E, R, S, N type .  
RTD types: Pt385 100 ~ 1K ohm, Pt 3916, Pt 3926 .
5. The transmitted interface with USB or Rs232 transmission wire & Software.



*Lead*

# TR-1XX SERIES TC+RTD DATA LOGGER THERMOMETER

**TC:K/J/T/E/R/S/N TYPES**  
**RTD: 2W/3W/4 WIRE**  
**Pt 385 100~1K/3916/3926**



## FEATURES:

- 4 1/2 digital counts with triplet displays.
- Resolution: 0.1°C/0.01°C, 0.1°C/0.01°F
- Function: °C/°F, MAX, MIN, HOLD, REL, ADJ, LIMIT HI/Lo, TYPE, TIME, START, CLOSE, T1-T2, BACK LIGHT, REC, CALL.
- Auto power off, Battery power capacity indication.
- RS-232 or USB interface with window software.
- 10000 Records Data Logger for each channel.
- CALL-Fit to quick read memory data. (50 page/sec)
- Temperature offset adjust.
- Record interval and measurement period setting.
- Warning beeper with Hi/Lo setting.
- TIME setting, REL setting.
- Real time clock with calendar.
- Battery Life : 500/hrs(ALKALINE BATTERY).
- CE-Mark approval. Conform to ITS-90.



## SPECIFICATIONS:

|   |   |
|---|---|
| TC Thermocouple range:                  | K Type: -200°C ~ 1372°C (-328°F ~ 2501°F)<br>J Type: -210°C ~ 1200°C (-346°F ~ 2192°F)<br>T Type: -250°C ~ 400°C (-418°F ~ 752°F)<br>E Type: -210°C ~ 1000°C (-346°F ~ 1832°F)<br>R/S Type: 0°C ~ 1767°C (32°F ~ 3212°F)<br>N Type: -150°C ~ 1300°C (-238°F ~ 2372°F)                           |
| RTD Range:                              | Pt 100 385: -200°C ~ 800°C (-328°F ~ 1472°F)<br>Pt 200 385: -200°C ~ 600°C (-328°F ~ 1112°F)<br>Pt 500 385: -200°C ~ 600°C (-328°F ~ 1112°F)<br>Pt 1000 385: -200°C ~ 600°C (-328°F ~ 1112°F)<br>Pt 100 3916: -200°C ~ 600°C (-328°F ~ 1112°F)<br>Pt 100 3926: -200°C ~ 600°C (-328°F ~ 1112°F) |
| Accuracy: (18°C ~ 28°C ambient)         | ±(0.05% rdg + 0.3°C) ±(0.05% rdg + 0.6°F)   |
| Operation temperature and humidity:     | 0°C ~ 50°C (32°F ~ 122°F), 0 ~ 80% RH   |
| Storage temperature and humidity:       | -20°C ~ 60°C (-4°F ~ 140°F), 0 ~ 80% RH   |
| Power requirement:                      | R03(AB) SIZE AAA/1.5V/UM-4 x 4PCS   |
| Input protection at thermocouple input: | 24V AC/DC Maximum   |
| Dimension: (Without holster)            | 169 mm X 76 mm x 32 mm.   |
| Weight:                                 | Approx. 270g  |

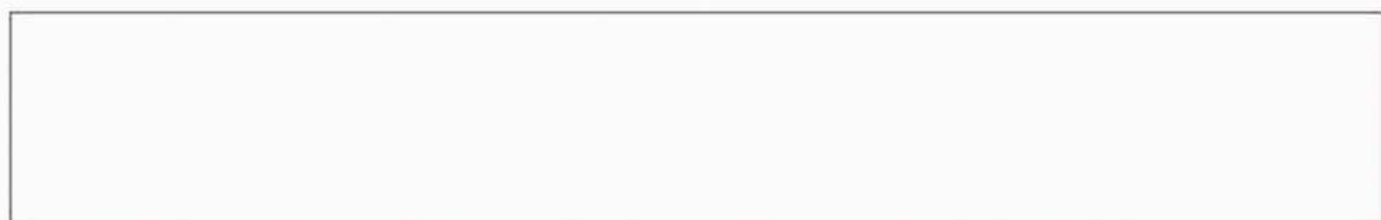
## ORDERING INFORMATION:

TR-1    SERIES

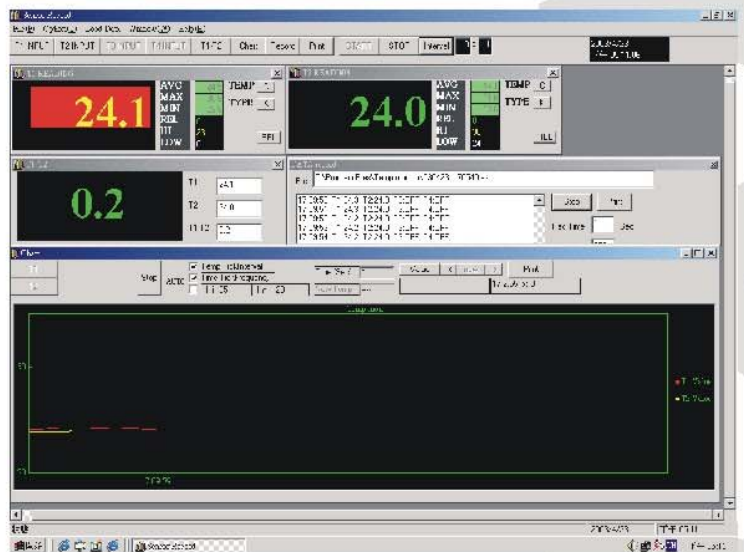
1. — K Type.
2. — K/J Types.
3. — K/J/T Types.
4. — K/J/T/E Types.
5. — K/J/T/E/R Types.
6. — K/J/T/E/R/S Types.
7. — K/J/T/E/R/S/N Types.

1. — Pt 385 100
2. — Pt 385 ,3916 100
3. — Pt 385 ,3916,3926 100
4. — Pt 385 100/200,  
Pt 3916,3926 100
5. — Pt 385 100/200/500,  
Pt 3916,3926 100
6. — Pt 385 100/200/500/1000,  
Pt 3916,3926 100

- Basic equipment  
(No Back Light)
- A — IR Interface  
(Include Back Light)
- B — IR Interface + Data Logger  
(Include Back Light)
- C — IR Interface + Data Logger  
+ Save Power Mode  
(Include Back Light)



# YC-7XXD SERIES K/J/E/T/R/S/N TYPES DATA LOGGER THERMOMETER



## FEATURES:

- **Tetrad Displays. Back Light.**
- **Resolution 0.1°C/0.1°F, 1°C/1°F.**
- **Function: °C/ °F/ K, MAX, MIN, AVG, HOLD, REL, LIMIT, Hi/Lo, TYPE, COUNT, TIME, CLOCK, CHANNEL, T1-T2, T3-T4, BACK LIGHT, RS-232, REC, CALL.**
- **Auto power off/on, Low Battery indication.**
- **RS-232 interface with window software.**
- **10000 Records Data Logger.**
- **CALL-Fit to quick read memory data. (50 page/sec)**
- **With a perpetual calendar function.**
- **CE-Mark approval. Conform to ITS-90.**
- **Battery Life : 1000/hr**



# SPECIFICATIONS:

|   |  |
|---|--|
| Thermocouple range:                     | K Type: -100°C ~ 1300°C (-148°F ~ 2372°F)<br>J Type: -100°C ~ 1000°C (-148°F ~ 1832°F)<br>E Type: -50°C ~ 800°C (-58°F ~ 1472°F)<br>T Type: -100°C ~ 400°C (-148°F ~ 752°F)<br>R/S Type: 0°C ~ 1700°C (32°F ~ 3092°F)<br>N Type: -100°C ~ 1300°C (-148°F ~ 2372°F)         |
| Accuracy: (18°C ~ 28°C ambient)         | K/J/E/T Type:<br>± (0.1% rdg + 0.7°C) -100°C ~ 1300°C<br>± (0.1% rdg + 1.4°F) -148°F ~ 2372°F<br>R/S Type:<br>± (0.1% rdg + 2°C) 0°C ~ 1700°C<br>± (0.1% rdg + 4°F) 32°F ~ 3092°F<br>N Type:<br>± (0.1% rdg + 1.5°C) -100°C ~ 1300°C<br>± (0.1% rdg + 3°F) -148°F ~ 2372°F |
| Operation temperature and humidity:     | 0°C ~ 50°C (32°F ~ 122°F), 0 ~ 80% RH  |
| Storage temperature and humidity:       | -20°C ~ 60°C (-4°F ~ 140°F), 0 ~ 80% RH  |
| Power requirement:                      | R03(AB) SIZE AAA/1.5V/UM-4 x 4PCS  |
| Input protection at thermocouple input: | 24V AC/DC Maximum  |
| Dimension: (Without holster)            | 164 mm X 76 mm x 32 mm.  |
| Weight:                                 | Approx.270g  |

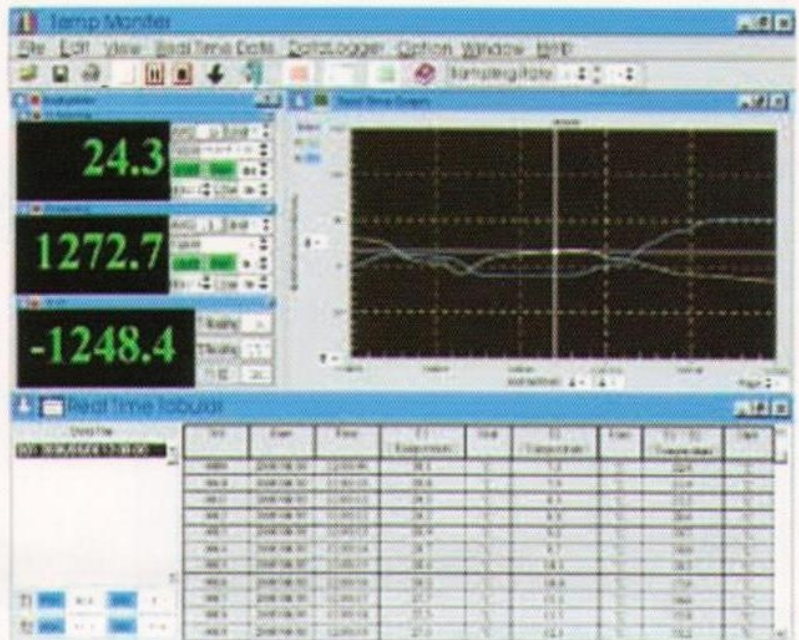
# ORDERING INFORMATION:

## YC-7 SERIES

- |                     |                           |  |
|---------------------|---------------------------|--|
| 1. — Single Channel | 1. — K Type.              | <input type="checkbox"/> — Basic equipment (No Back Light) |
| 2. — Dual Channel   | 2. — K/J Types.           | R — RS-232 Interface (Include Back Light)                  |
| 3. — Triple Channel | 4. — K/J/E/T Types.       | D — RS-232+Data Logger (Include Back Light)                |
| 4. — Tetrad Channel | 7. — K/J/E/T/R/S/N Types. |  |

# LEAD

# RTD-1XX SERIES RTD 2W/3W/4 WIRE Pt 385 100~1K/3916/3926 DATA LOGGER THERMOMETER



## FEATURES:

- 4 1/2 digital counts with triplet displays.
- Resolution: 0.1°C/0.01°C, 0.1°F/0.01°F
- Function: °C/°F, MAX, MIN, HOLD, REL, LIMIT HI/Lo, TYPE, TIME, START, CLOSE, T1-T2, BACK LIGHT, REC, CALL.
- Auto power off, Battery power capacity indication.
- RS-232 or USB interface with window software.
- 10000 Records Data Logger for each channel.
- CALL-Fit to quick read memory data.(50 page/sec)
- Temperature offset adjust.
- Record interval and measurement period setting
- Warning beeper with Hi/Lo setting.
- TIME setting, REL setting.
- Real time clock with calender.
- Battery Life : 500/hrs(ALKALINE BATTERY).
- CE-Mark approval. Conform to ITS-90.

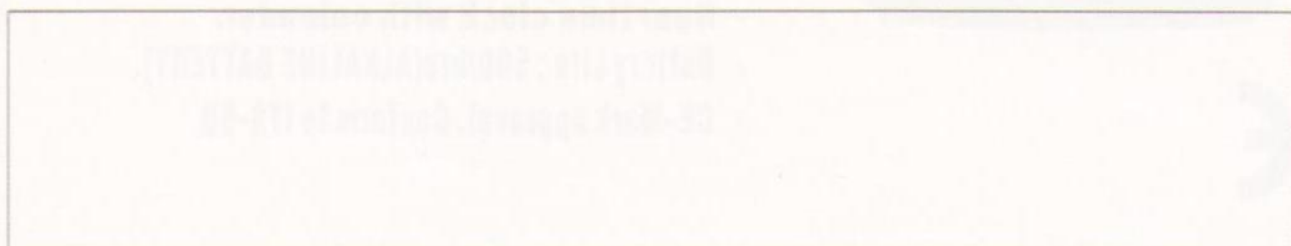
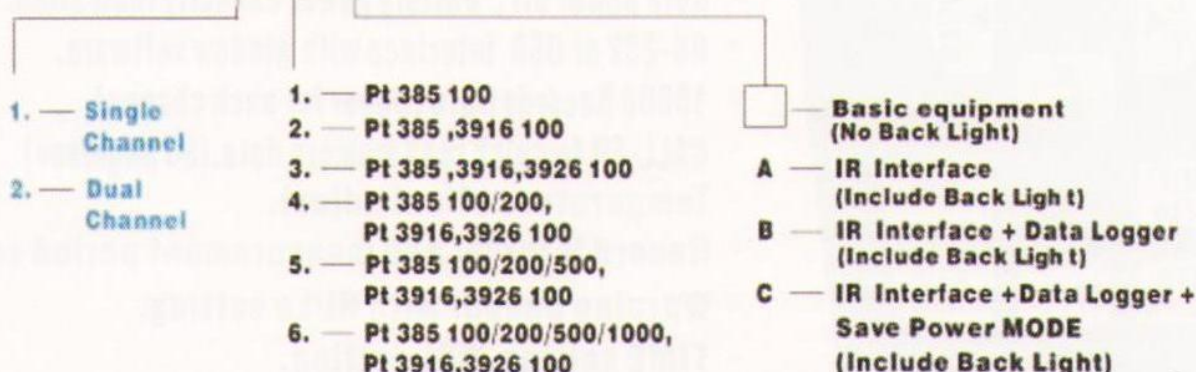




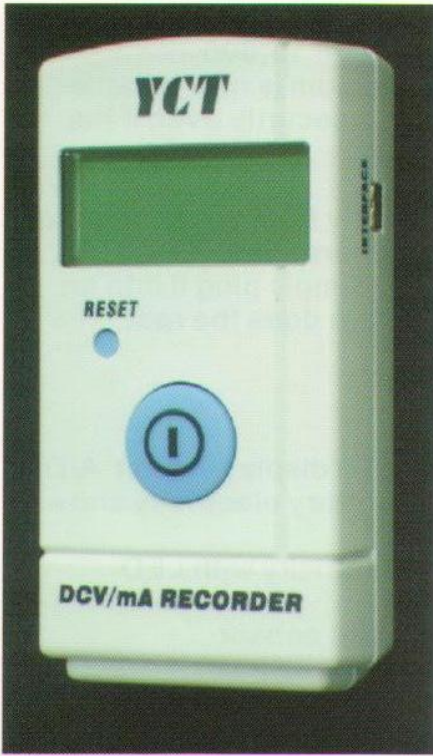
## SPECIFICATIONS:

|   |  |
|---|--|
| RTD Range:                              | Pt100 385 : -200°C ~ 800°C (-328°F ~ 1472°F)<br>Pt 200 385 : -200°C ~ 600°C (-328°F ~ 1112°F)<br>Pt 500 385 : -200°C ~ 600°C (-328°F ~ 1112°F)<br>Pt 1000 385 : -200°C ~ 600°C (-328°F ~ 1112°F)<br>Pt 100 3916 : -200°C ~ 600°C (-328°F ~ 1112°F)<br>Pt 100 3926 : -200°C ~ 600°C (-328°F ~ 1112°F) |
| Accuracy:(18°C – 28°C ambient)          | $\pm(0.05\% \text{ rdg} + 0.3^{\circ}\text{C})$<br>$\pm(0.05\% \text{ rdg} + 0.6^{\circ}\text{F})$   |
| Operation temperature and humidity:     | 0°C – 50°C(32°F ~ 122°F), 0 – 80% RH   |
| Storage temperature and humidity:       | -20°C – 60°C(-4°F – 140°F), 0 – 80% RH   |
| Power requirement:                      | R03(AB) SIZE AAA/1.5V/UM-4 x 4PCS  |
| Input protection at thermocouple input: | 24V AC/DC Maximum  |
| Dimension:(Without holster)             | 169 mm X 76 mm x 32 mm.  |
| Weight:                                 | Approx.270g  |

## ORDERING INFORMATION:

RTD-1    SERIES

# Voltage / Current Recorder



The recorder is a miniature, battery powered, stand alone, voltage/current recorder, This is an all-in-one compact, portable, easy to use device that will measure and record up to 10,000 measurements per channel. The storage medium is non-volatile solid state memory, providing maximum data security even if the battery becomes discharged.

The device can be started and stopped directly from your computer and its small size allows it to fit almost anywhere. The R1-xx1x series makes data retrieval quick and easy. Simply plug it into an empty com port and our user-friendly software does the rest.

## Features

1. 4- ½ digit 19999 LCD display or LED display, 16-bit A/D.
2. Voltage+Current & Voltage & Current (option).
3. LCD display --The four sections battery electricity shows symbols.
4. Express the state of the battery electricity with LED flashing numbers.
5. CH1--DC Voltage of input measurement.  
CH2--DC Current of input measurement.
6. The transmitted interface with **USB** or **RS232** transmission wire & window software.
7. Very easy to be set up the function fast by the software.
8. Frequency of measurement : 1 Minute to 59 Minutes Intervals.
9. Resolution: DCmA: 0.01 / DCV: 0.001 .
10. Battery Life: 1 year (measuring rate: 15min).
11. Low cost, User-friendly, Miniature size: 8.6 x 4.5 x 2.5cm.



## Applications

1. Extreme temperature monitoring
2. Warehouse monitoring
3. HVAC
4. Medical/Pharmaceutical
5. Oven profiling
6. Museum monitoring
7. Environmental studies
8. Replace costly atrip chart recorders
9. Implement HACCP programs

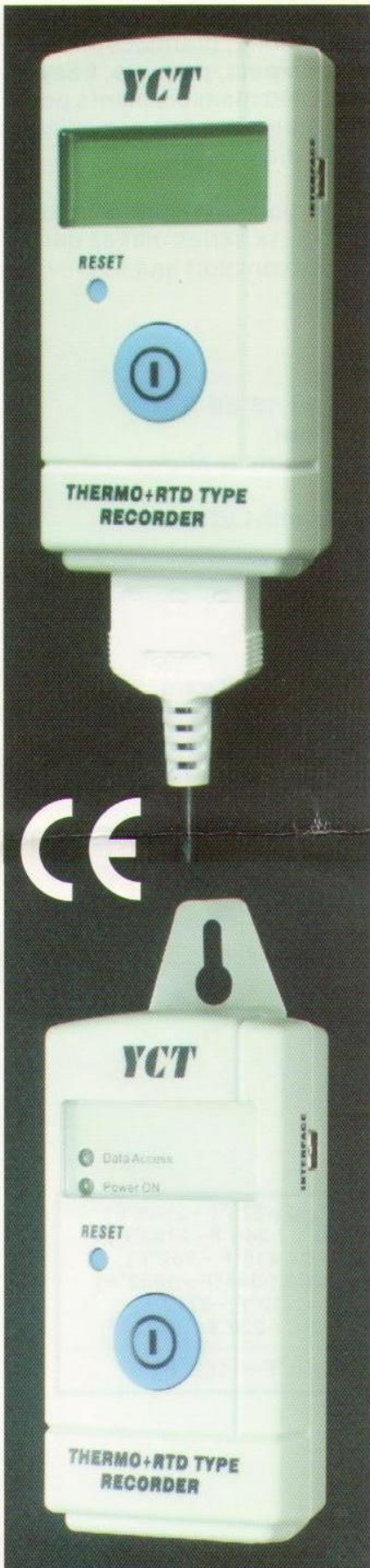
|                   |                 |
|-------------------|-----------------|
| DC Voltage range: | DCV: 0 ~ 20V    |
| DC Current range: | DCmA: 0 ~ 200mA |

## Ordering information:

R1-01 SERIES

- |                               |                 |
|-------------------------------|-----------------|
| 1. DCV + DCmA (dual channel). | 0. LED display. |
| 2. DCV (single channel).      | 1. LCD display. |
| 3. DCmA (single channel).     |                 |

# Temperature + RTD Temperature Recorder



The record is a miniature, battery powered, stand alone, RTD temperature based temperature recorder, This is an all-in-one compact, portable, easy to use device that will measure and record up to 10,000 measurements per channel. The storage medium is non-volatile solid state memory, providing maximum data security even if the battery becomes discharged.

The device can be started and stopped directly from your computer and its small size allows it to fit almost anywhere. The R1-6x1x series makes data retrieval quick and easy. Simply plug it into an empty com port and our user- friendly software does the rest.

## Features

1. 4- ½ digit 19999-LCD display or LED display, 16-bit A/D.
2. Platinum RTD :Pt 100/200/500/1000 385, Pt 3916, Pt. 3926 ohm ( option).
3. LCD display --The four sections battery electricity shows symbols.
4. Express the state of the battery electricity with LED flashing numbers.
5. CH1--The inside is build temperature sensor.  
CH2--The RTD temperature of input measurement.
6. The transmitted interface with **USB** or **RS232** transmission wire & window software.
7. Very easy to be set up the function fast by the software.
8. Frequency of measurement : 1 Minute to 59 Minutes Intervals.
9. Resolution:0.1, Battery Life:1 year(measuring rate:15min).
10. Low cost, User-friendly, Miniature size:8.6 x 4.5 x2.5cm.

## Applications

1. Extreme temperature monitoring
2. Warehouse monitoring
3. HVAC
4. Medical/Pharmaceutical
5. Oven profiling
6. Museum monitoring
7. Environmental studies
8. Replace costly atrip chart recorders
9. Implement HACCP programs

|                           |  |
|---------------------------|--|
| RTD range:                | Pt 100 385 : -200°C ~ 800°C (-328°F ~ 1472°F)  |
|                           | Pt 200 385 : -200°C ~ 600°C (-328°F ~ 1112°F)  |
|                           | Pt 500 385 : -200°C ~ 600°C (-328°F ~ 1112°F)  |
|                           | Pt 1000 385 : -200°C ~ 600°C (-328°F ~ 1112°F) |
|                           | Pt 100 3916 : -200°C ~ 600°C (-328°F ~ 1112°F) |
|                           | Pt 100 3926 : -200°C ~ 600°C (-328°F ~ 1112°F) |
| Temperature sensor range: | -20°C ~ 70°C (-4°F ~ 158°F)                    |

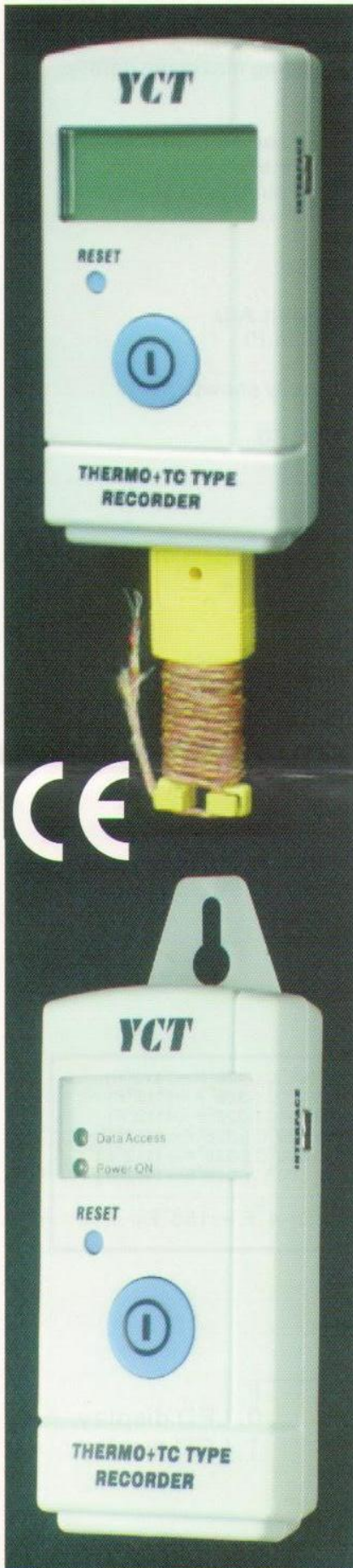
## Ordering information:

R1-61 SERIES

- |  |   |  |
|--|---|--|
| <ol style="list-style-type: none"> <li>1. Pt 100 385.</li> <li>2. Pt 3916.</li> <li>3. Pt 3926.</li> <li>4. Pt 200 385.</li> </ol> | <ol style="list-style-type: none"> <li>5. Pt 500 385.</li> <li>6. Pt 1000 385.</li> <li>A. Pt 100 385,3916.</li> <li>B. Pt 100 385,3916,3926 .</li> </ol> | <ol style="list-style-type: none"> <li>0. LED display.</li> <li>1. LCD display.</li> </ol> |
|--|---|--|

*Lead*

# Temperature +TC Types Thermocouple Recorder



The recorder is a miniature, battery powered, stand alone, thermocouple based temperature recorder, This is an all-in-one compact, portable, easy to use device that will measure and record up to 10,000 measurements per channel. The storage medium is non-volatile solid state memory, providing maximum data security even if the battery becomes discharged.

The device can be started and stopped directly from your computer and its small size allows it to fit almost anywhere. The R1-5x1x series makes data retrieval quick and easy. Simply plug it into an empty com port and our user- friendly software does the rest.

## Features

1. 4- ½ digit 19999 LCD display or LED display, 16-bit A/D.
2. TC Types : K , J , T , E , R , S , N type (option).
3. LCD display --The four sections battery electricity shows symbols.
4. Express the state of the battery electricity with LED flashing numbers.
5. CH1--The inside is build temperature sensor.  
CH2--The thermocouple of input measurement.
6. The transmitted interface with **USB** or **RS232** transmission wire & window software.
7. Very easy to be set up the function fast by the software.
8. Frequency of measurement : 1 Minute to 59 Minutes Intervals.
9. Resolution:0.1, Battery Life:1 year(measuring rate:15min).
- 10.Low cost, User-friendly, Miniature size:8.6 x 4.5 x2.5cm.

## Applications

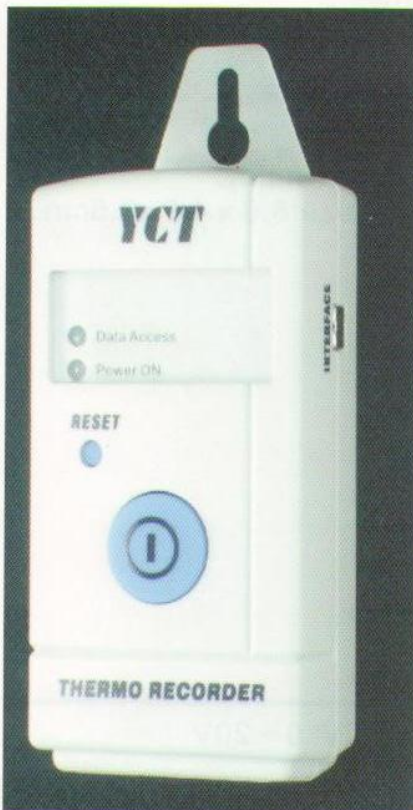
1. Extreme temperature monitoring
2. Warehouse monitoring
3. HVAC
4. Medical/Pharmaceutical
5. Oven profiling
6. Museum monitoring
7. Environmental studies
8. Replace costly atrip chart recorders
9. Implement HACCP programs

|                           |  |
|---------------------------|--|
| TC Thermocouple range:    | K Type: -200°C ~ 1372°C (-328°F ~ 2501°F)<br>J Type: -210°C ~ 1200°C (-346°F ~ 2192°F)<br>T Type: -250°C ~ 400°C (-418°F ~ 752°F)<br>E Type: - 210°C ~ 1000°C (-346°F ~ 1832°F)<br>R/S Type: 0°C ~ 1767°C (32°F ~ 3212°F)<br>N Type: -150°C ~ 1300°C (-238°F ~ 2372°F) |
| Temperature sensor range: | -20 °C ~ 70 °C (-4 °F ~ 158 °F)  |

## Ordering information:

R1-**5****1**SERIES

- |            |                   |                 |
|------------|-------------------|-----------------|
| 1. K Type. | 6. S Type.        | 0. LED display. |
| 2. J Type. | 7. N Type.        | 1. LCD display. |
| 3. T Type. | A. K/J Types.     |                 |
| 4. E Type. | B. K/J/T/E Types. |                 |
| 5. R Type. |                   |                 |



The recorder is a miniature, battery powered, stand alone, based temperature recorder, This is an all-in-one compact, portable, easy to use device that will measure and record up to 10,000 measurements per channel. The storage medium is non-volatile solid state memory, providing maximum data security even if the battery becomes discharged.

The device can be started and stopped directly from your computer and its small size allows it to fit almost anywhere. The R1-401x series makes data retrieval quick and easy. Simply plug it into an empty com port and our user- friendly software does the rest.

## Features

1. 4- ½ digit 19999 LCD display or LED display ,16-bit A/D.
2. LCD display --The four sections battery electricity shows symbols.
3. Express the state of the battery electricity with LED flashing numbers.
4. CH1– The inside is build temperature sensor .
5. The transmitted interface with **USB** or **RS232** transmission wire & window software.
6. Very easy to be set up the function fast by the software.
7. Frequency of measurement : 1 Minute to 59 Minutes Intervals.
8. Resolution:0.1,Battery Life:1 year(measuring rate:15min).
9. Low cost, User-friendly, Miniature size:8.6 x 4.5 x2.5cm.

1. Extreme temperature monitoring
2. Warehouse monitoring
3. HVAC
4. Medical/Pharmaceutical
5. Oven profiling
6. Museum monitoring
7. Environmental studies
8. Replace costly atrip chart recorders
9. Implement HACCP programs

|                           |                            |
|---------------------------|----------------------------|
| Temperature sensor range: | -20°C ~ 70°C(-4°F ~ 158°F) |
|---------------------------|----------------------------|

## Ordering information:

R1- 401

0. LED display.  
1. LCD display.

*Lead*